

STATE OF MINNESOTA, }
COUNTY OF MURRAY, } ss.

I hereby certify that the within Instrument was filed in this office for record on the 6TH day of FEBRUARY A.D. 20 19 at 11:00 o'clock A. M, and was duly recorded as Document No. -

Evelyn C. Larson
County Recorder

Index No. G-9

CERTIFICATE OF LOCATION OF GOVERNMENT CORNER

EAST QUARTER Corner of Section 8, Township 105 N, Range 43 W

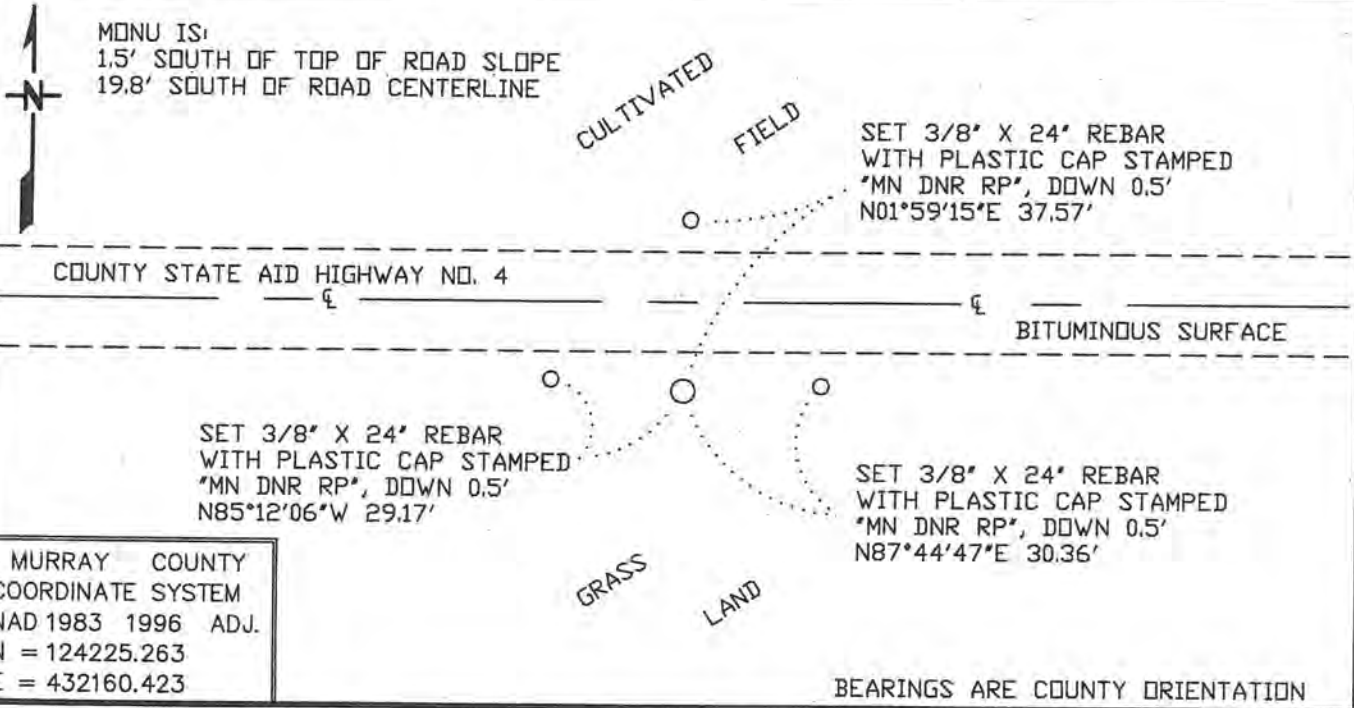
5TH Principal Meridian, State of Minnesota, County of MURRAY

At the corner location shown on the sketch:

On 5/1/2018 found an IRON ROD WITH PLASTIC RLS CAP #42620, DOWN 0.5'
DATE

left monument as found, lowered monument, removed monument (explain)

On _____ Placed a _____
DATE



Statement of evidence for this corner location is on back of this page.

JAN 2019
NPB00139

I hereby certify that this plan, specification, or report was prepared by me or under my direct supervision and that I am a duly Licensed Land Surveyor under the laws of the State of Minnesota.

SIGNATURE Bruce W. Shepherd
BRUCE W. SHEPHERD

DATE 2/5/19

License Number 17003

The DNR Division of Lands and Minerals contacted the following for survey information:

Website - mngeo.state.mn.us for GLO plat and field notes
Website - murray-countymn.com for section and quarter section corner information
Website - dot.state.mn.us/maps/gisweb/row
Murray County Recorder's Office
Bueltel-Moseng Land Surveying, Inc. of Marshall
Ulteig Engineering
Nyberg Surveying of Alexandria

- 1866 U.S. General Land Office notes, obtained from mngeo.state.mn.us, show the corner marked with a post, in a mound.
- 1908 Plat Book for Moulton Township, obtained from the County Recorder's Office, shows a north-south property division in the area of the corner.
- 1913 June 18, a Surveyor's Record Book, page 230, obtained from the County Recorder's Office, which is also on Website murray-countymn.com, contains a survey in Section 9 by J. W. Woolstencraft, County Surveyor. Survey shows corner but does not indicate what kind of monument was found or set. The corner is shown:
5291 feet from the east quarter corner of Section 9
- 1918 June 30, Right of Way and Track Map for the Chicago, Milwaukee & St. Paul Ry. Co. - Sheet 16 of 23, obtained Website - dot.state.mn.us/maps/gisweb/row, shows the east line of Section 8 at Station 3147+73 with a distance of 1771 feet from it to the southeast corner of Section 8. No information is given about the east quarter corner of Section 8.
- 1926 Plat Book for Moulton Township, obtained from the County Recorder's Office, shows the same owner in all four quadrants in the area of the corner.
- No Date Construction Plan Sheet 8 of 47 for County State Aid Highway Number 4, obtained from the County Highway Engineer's Office, shows the east line of Section 8 at POT Station 220+00. No information is given about the east quarter corner of Section 8.
The County Engineer's Office reviewed their field notes and no information was found concerning this quarter corner.
- 2016 December 22, an ALTA/NSPS Land Title Survey for Valley View Transmission, LLC, Murray County, obtained from Nyberg Surveying, by Micah T. Radach, PS No 51816, shows that an iron rebar with plastic cap stamped "RLS 13145", "RLS 42620", or "RLS 45335" was set for the corner. The corner is shown:
midway and on line between adjoining section corners 2662.17 feet apart
5270.53 feet from the east quarter corner of Section 9
- 2018 April 30, the DNR Division of Lands and Minerals found that no evidence of the railroad grade exists in the area of Sections 8 and 9. Some piles from the railroad bridges were found and located. Then centerline stationing was computed from the center of the bridge piles and it was found that a 100 foot difference exists between stationing in what was found in the field versus what's shown on the railroad right-of-way map. Therefore did not attempt to compute a corner location based on the railroad information.

East Quarter Corner of Section 8, Township 105 North, Range 43 West
Page 2 of 2

2018 May 1, the DNR Division of Lands and Minerals found a plastic capped iron rod, down 0.5 of a foot, at the corner. The capped iron rod was found to be:
19.8 feet south of the center line of CSAH No 4
2662.22 feet from the northeast corner of Section 8
2662.19 feet from the southeast corner of Section 8
on line between adjoining section corners

A point was computed on the east line of Section 8 and on the centerline of the old railroad per centerline of bridge piers and was found to be:
1788.3 feet from the southeast corner of Section 8

Analysis of the above information led the DNR Division of Lands and Minerals to conclude that the found plastic capped iron rod marks the lost position of the corner.